

KIMOTO

MC Remote Control Software
MCTerminal
Operation Manual

KIMOTO ELECTRIC CO., LTD.

Abstract

We are delighted that you have decided to use KIMOTO's analyzers. MCTerminal is a free software that displays the screen of KIMOTO's analyzers and data loggers in PC. Also, you can operate the analyzers remotely by the mouse operation of PC. Ethernet-HUB supporting 10/100 BASE-T should be necessary to communicate. Microsoft® Windows-based PC (7, Vista™, XP) is needed to operate the MCTerminal.

Contents

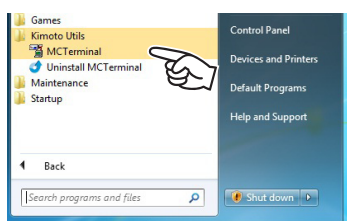
1. INSTALLATION	1
2. NETWORK CONNECTION	2
2.1 Ethernet setting of PC	2
2.2 Connection method between KIMOTO's analyzer and PC	2
2.2.1 Connection using a cross cable	2
2.2.2 Connection using a Ethernet HUB	3
3. OPERATION	4
3.1 Start of MCTerminal	4
3.2 Connection to analyzers	4
3.3 Operation of screen	4
3.4 Disconnection	4
4. APPENDIX	5
4.1 Typical IP Address of KIMOTO's analyzers	5
4.2 Version of MCTerminal	5
4.3 Download Site of MCTerminal	5

1. INSTALLATION

Start the installation process using install program "MCTerminal2.exe". You can download the installer from our website. (Refer Sec.4.3.)

Wizard screen appears when you open the install program. Install the MCTerminal following the instructions on the screen.

After installation was performed, you will be able to find MCTerminal to boot on the desktop as below. Also, the MCTerminal can be started from "Start" button -> "Programs" -> "Kimoto Utils" -> "MCTerminal".



2. NETWORK CONNECTION

All KIMOTO's analyzers have an Ethernet port. You can easily download the data to your PC via Ethernet. It may need some networking knowledge such as administrative privileges of Windows in order to setup the software. If you have any trouble to setup, please ask to a network administrator or an authority managing the network.

2.1 Ethernet setting of PC

It is necessary to setup Ethernet connection of your PC before data communication. All our analyzers manufactured after December 2005 have dynamic host configuration protocol (DHCP) that assigns IP addresses automatically. For other analyzers manufactured before December 2005, it is need to manually setup the IP address and subnet mask.

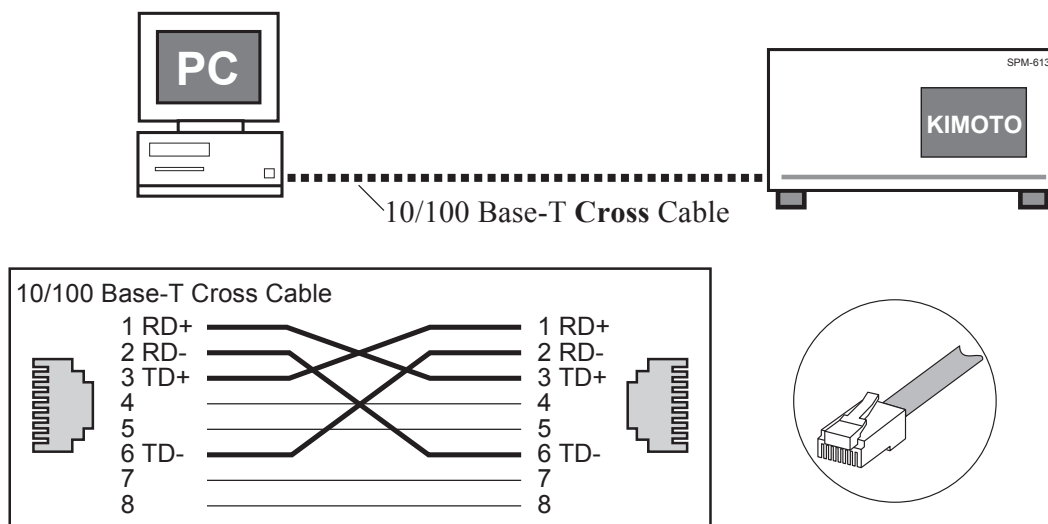
For example (manual setting);
 IP address: 192. 168. 0. 10
 Subnet mask: 255. 255. 255. 0

2.2 Connection method between KIMOTO's analyzer and PC

There are two methods for communication between our analyzer and PC. One is one-to-one communication using a cross-cable Another is multiaccess communications using Ethernet HUB.

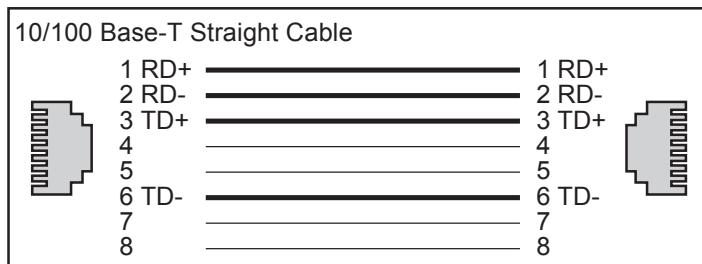
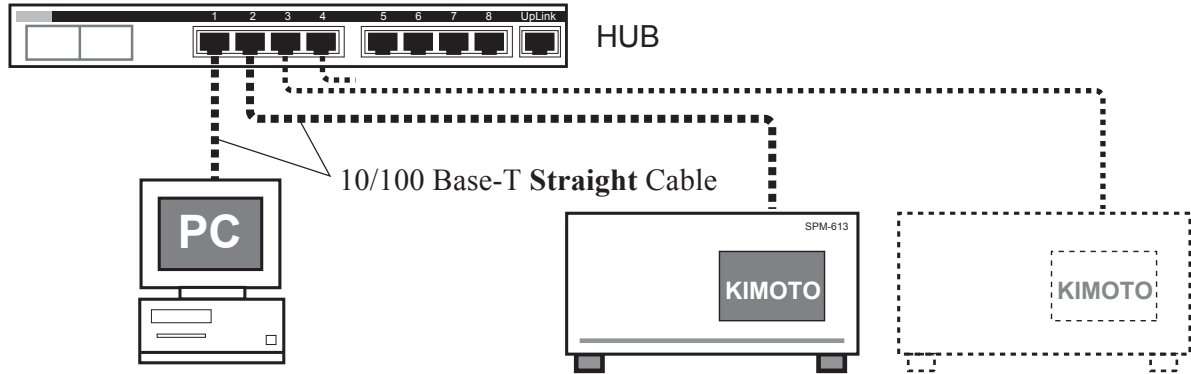
2.2.1 Connection using a cross cable

The following figure shows a connection using a crossover Ethernet cable. Sometimes the connection cannot be established because of specification of the PC. In that case, it is recommended to use HUB as shown in section 2.2.2.



2.2.2 Connection using a Ethernet HUB

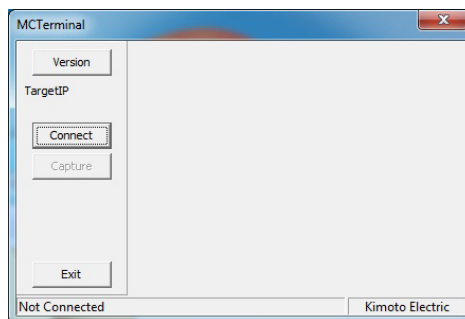
The following figure shows a connection using Ethernet HUB and some straight cables. In the case of the connection using a HUB, it allows the multiple communications between your PC and our analyzers simultaneously.



3. OPERATION

3.1 Start of MCTerminal

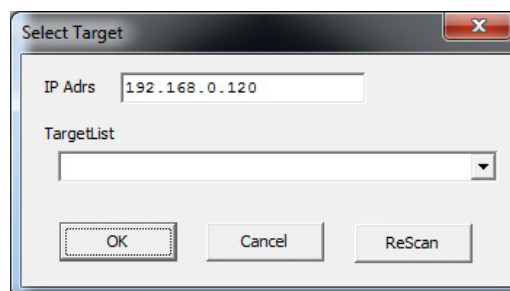
- "Version" button : displays the version number of MCTerminal
- "Connect" button : displays the dialog box connecting to analyzer
- "Capture" button : captures screen image of the analyzer, and saves the image in BMP format
- "Exit" button : ends MCTerminal



3.2 Connection to analyzers

(1)Click "Connect" button, and a dialog box connecting to analyzer is displayed.

Input IP address of the analyzer. Click "Target List" pull-down menu, and the list of the analyzers that can be connected is displayed. Select an analyzer from the list, then the IP address of the analyzer is input automatically. Also, IP address can be input directly.

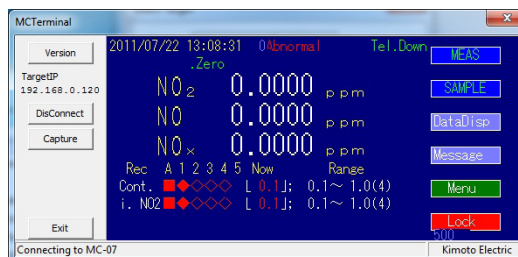


(2)Click "OK" button. (*)

3.3 Operation of screen

After the connection is established, the screen of the analyzer is displayed. Click the displayed screen with the mouse, that can emulate the touch screen operation of the analyzer.

- When you operate the analyzer with MCTerminal;
 - The actual screen of the analyzer is not displayed.
 - The actual touch screen of the analyzer can not sense the touch operation.



3.4 Disconnection

Click "Exit" button to disconnect from the analyzer.

(*) If your OS is Windows 7 or Windows Vista, "Windows Security Alert" would be indicated when you click "OK" button. In order to allow communication with your analyzer, check-off all boxes and click "Allow Access" button. Also, administrative privileges are required to allow access.

4. APPENDIX

4.1 Typical IP Address of KIMOTO's analyzers

Data Logger	192.168.0.110
Nitrogen Oxides Analyzer	192.168.0.120
Ozone Analyzer	192.168.0.130
Sulfur Dioxide Analyzer	192.168.0.140
Particulate Matter Monitor	192.168.0.150

4.2 Version of MCTerminal

Click "Version" button and you can see the version number of MCTerminal.



4.3 Download Site of MCTerminal

The latest installer is located on the web site at;

<http://www.kimoto-electric.co.jp/support/index.html>

This manual is applicable for the following versions of software.

PID 2450 Ver.2.0.0 or later

KIMOTO

KIMOTO ELECTRIC CO., LTD.

OFFICE: 3-1 Funahashi-cho Tennoji-ku Osaka 543-0024 JAPAN

TEL +81-6-6768-3401 FAX +81-6-6764-7040

URL <http://www.kimoto-electric.co.jp/>