

# KIMOTO

## TOC Automatic Analyzer

### VS-6050

TOC (Total Carbon ) and TOC (Total Organic Carbon) are used as are used as the organic contamination index of the environmental water for the water quality control, the waste water treatment devices control and the organic contamination check of the clean water for process control.

This analyzer, VS-6050, is for the continuous monitoring of TOC, and is focused on measuring accuracy and the easy maintenance.

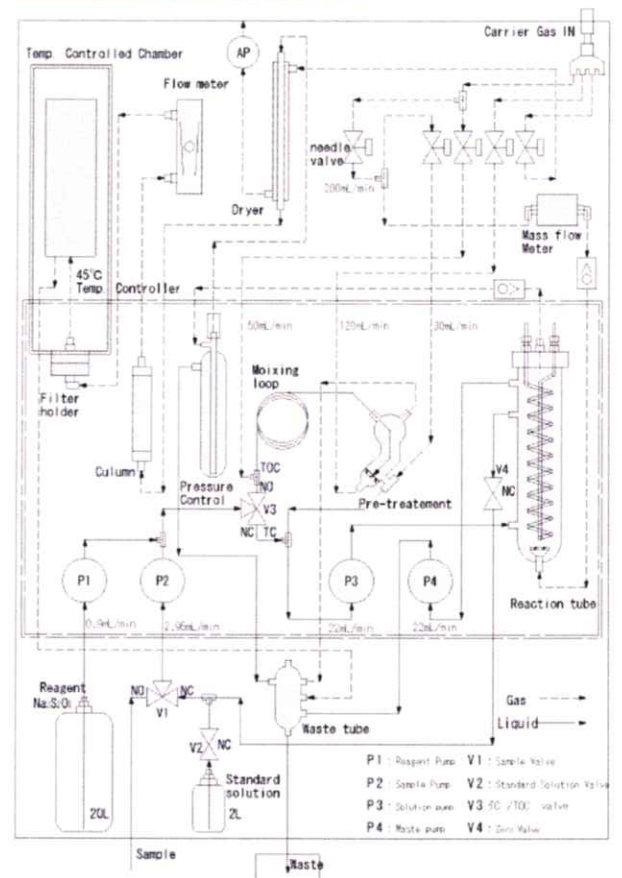
Decomposed and oxidized CO<sub>2</sub> gas is measured by the NDIR (Non-Dispersive Infrared analyzer method) analyzer. The zero and span stability and the high linearity for from low to high concentration range are realized. Furthermore the additional function like as the auto calibration check function is available for the high data accuracy.



## Feature

- By the continuous acidic aeration and the wet oxidation reaction, the continuous measuring is possible and the stable indication (data) can be gained for long time.
- TC measuring mode or TOC measuring mode is selectable.
- The measuring with the high sensitivity and the high linearity is gained by the concentration calculation using NDIR output.
- By using the mass flow meter of the carrier gas, the UV lamp and the pump become off, when the flow rate is low. So the safety become better, when the carrier gas do not flow.
- By the auto calibration function, the calibration at optional time, and then the data reliability is better.
- By the touch panel type large LCD with Chinese letter display, the user interface, the interactive operation program is kind for the operator.
- Maintenance like as standard solution check, reagent exchange and tube exchange etc. is easy.

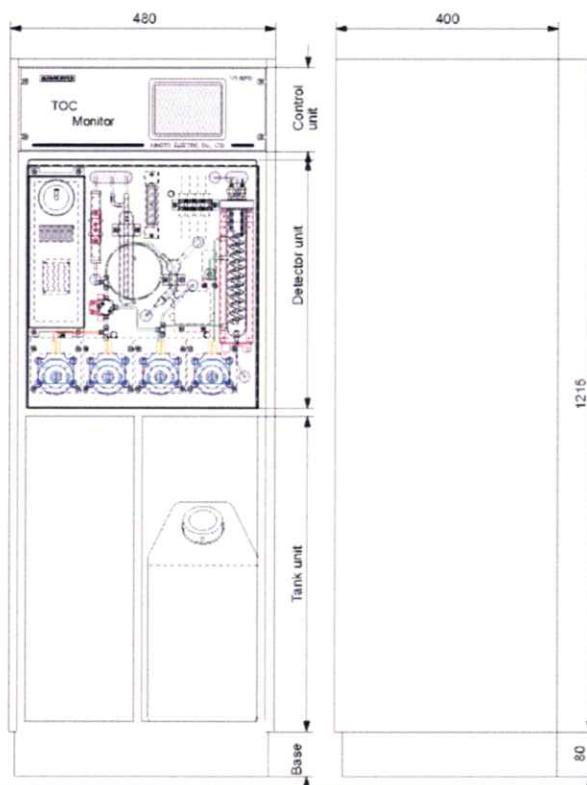
## Flow Diagram



# Specifications

|                     |  |
|---------------------|--|
| Meas. Range         | 0-10mgC/L, 0-100mgC/L, 0-500mgC/L  |
| Repeatability       | within $\pm 5\%$ /FS of each meas. range. (as Standard solution measuring)   |
| Zero drift          | within $\pm 3\%$ /FS.  |
| Span drift          | within $\pm 3\%$ /FS (as Standard solution measuring)  |
| Response time       | within about 5 minutes (90%) , about 10 min. for 0-500mgC/L.   |
| Meas. Cycle         | Continuous.  |
| Display             | Touch panel type LCD<br>Chinese letter display, Time, Concentration, Input signal, Running situation, Set value, Message etc.. |
| Reagent Consumption | sodium persulfate [persulphate] solution, 20L/20days.  |
| Output              | Analog Output/DC0~1V,4~20mA (Option)<br>10Base-T, Telemeter Output, (RS-232C, serial recorder output)                          |
| Power               | AC100V $\pm$ 10V (50/60Hz)   |
| Power Consumption   | 200VA (general)  |
| Size                | W480 $\times$ H1295 $\times$ D400mm  |
| Weight              | about 70kg   |
| Operation Temp.     | 2-40 $^{\circ}$ C  |
| Operation RH        | less than 85%RT, not dew.  |

# Outer View



## KIMOTO ELECTRIC CO., LTD.

543-0024

3-1 Funahashi-cho, Tennouji-ku, Osaka

TEL : +81-6-6765-8773, FAX : +81-6-6764-7040.

Web site : <http://www.kimoto-electric.co.jp>, E-mail : [sales@kimoto-electric.co.jp](mailto:sales@kimoto-electric.co.jp).